



## Blewbury Endowed C of E Primary School

Westbrook Street, Blewbury, Didcot, Oxon. OX11 9QB

Telephone: (01235) 850411

Lisa Austin Executive Head: [lisa.austin@blewbury.oxon.sch.uk](mailto:lisa.austin@blewbury.oxon.sch.uk)



Wednesday 1<sup>st</sup> September 2021

Dear parents and carers,

We hope you all had an enjoyable and restful summer break, and we look forward to welcoming you back on Friday.

We are writing this letter ahead of the start of term so you are fully informed of all our covid procedures and any changes we have needed to make ahead of the new academic year, so that school can start smoothly.

### Staffing

We will be saying a fond farewell to Mrs Alex Jacob and the end of the first half term. Mrs Jacob has been a valued member of the team here at Blewbury for the past 9 years. I'm sure you will all join us in saying a huge thank you to her for her dedication and hard work. We wish her well for her future endeavours.

We have three new members of staff joining us this September:

#### Miss Reeder – Head of school

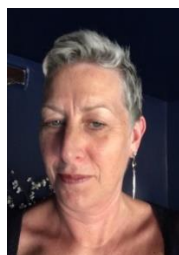
*I am delighted to have been appointed as the new Head of School. My vision is to ensure that all pupils flourish, and I will be spending time during this first term getting to know the pupils well.*

*I will be working closely with the staff, governors and ODST to celebrate the strengths the school has, embed the new initiatives that the team have already started, and offering my support for areas to be developed.*

*I enjoyed meeting many of you during my transition days last summer and look forward to seeing the whole community in due course; I hope to be accessible to you if you need me.*



#### Mrs Parvin – Picasso class teacher



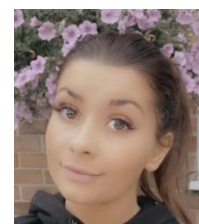
*I am very happy to be working at Blewbury Primary School again and look forward to meeting you all.*

*I have been teaching for over twenty years now, both in mainstream and in a specialist school for dyslexic children. My interests are the theatre, film and travelling – all things that have been curtailed recently! – and I love gardening, in my cottage garden in Steventon. I come from a large family with two grown-up sons of my own; my mother was a teacher and passed her love of teaching children to me.*

#### Miss Freeman – TA in Goldsworthy class and Wrap around care supervisor.

*My name is Ameerah and I am delighted to be re-joining Blewbury Primary School this coming September.*

*I look forward to seeing you all very soon!*



## Covid Safety September 2021

We are really looking forward to welcoming the children back into school, and want to reassure you that your child's safety is our utmost priority. We have used the Government guidance to carefully risk-assess provision and activities, ensuring that these can take place with appropriate safety measures to allow everyone to learn and work safely. Below are the changes to Covid measures and routines within our school for this term.

### The DfE guidance can be grouped under the following themes:

Ensure good hygiene for everyone.

- This will continue as last year, and we are confident that these are robust routines.
- Children will wash / sanitise hands when entering / exiting the classroom, using the toilet, before and after eating.
- We will remind the children how to ensure good hygiene.
- No equipment should be brought in from home (other than a water bottle/packed lunch)- each child will be given their own basic supplies to use in the classroom

2. Maintain appropriate cleaning regimes.

- This will continue as last year.
- Spaces are cleaned regularly throughout the day, and deep cleaned after school.
- Shared spaces are cleaned before and after use by groups.
- Equipment is frequently cleaned.

3. Keep occupied spaces well ventilated.

- Windows and doors will be open for ventilation - as before, it is recommended that you plan for your child to wear extra layers (vest, additional jumper / bodywarmer) when the weather gets colder.
- We will be monitoring air quality using CO2 monitors, provided by the DfE.

4. Follow public health advice on testing, self-isolation and managing confirmed cases of COVID-19.

- Parents and household members are asked to test with a lateral flow test twice weekly. At school, staff do this on Sunday and Wednesday evenings - please do join us in keeping our community as safe as possible.

It is important that you keep school informed if anyone in your household develops coronavirus symptoms, or if they are a close contact of a positive case. This helps us to keep others in school safe, and to use additional safety measures wherever appropriate.

- Children **MUST NOT** attend school if they display symptoms of coronavirus
- Children will be sent home if they display symptoms of coronavirus
- Children displaying symptoms of coronavirus must isolate immediately and seek a PCR test at a test site. Lateral flow tests should not be used.

Contact tracing for pupils is now conducted by Test and Trace rather than school. This means that if your child tests positive for covid, you will be asked who your child's close contacts have been.

## The School Day

We will continue with our one-way system at drop off and pick up.

Please stop at your child's outer classroom door, where they can walk into school independently. When you have dropped off your child, please exit the site and refrain from gathering in groups where possible.

Please note that school opens at 8:45am and finishes at 3:15pm. Registration is at 8.55am with registers closing at 9:00am. Any pupils arriving after this time must enter the school via the main entrance and will be marked in by the office team as late.

## Communication

Please email [office.3248@blewbury.oxon.sch.uk](mailto:office.3248@blewbury.oxon.sch.uk) or phone the office on 01235850411 with anything you need rather than approach staff at the gate, as we continue to reduce teachers' contacts for their safety. We are very happy to give you a call or arrange a meeting to help at any time.

Please only come into the main school entrance if you have an appointment or it is an urgent matter that cannot be addressed in an email or phone call.

Teachers have been busy updating class pages on our [website](#), so do look there for current information on what your child is learning.

If you have any questions or concerns and would like further information, please do not hesitate to email us. We are more than happy to give further reassurance or details if this helps your family to be better informed.

Looking forward to seeing you at 8.45am on Friday 3rd September!

Yours sincerely,

*Miss Austin*  
Executive Head

*Miss Reeder*  
Head of School

Diary Dates	
Thursday 2 <sup>nd</sup> September	InSET (school closed for pupils)
Friday 3 <sup>rd</sup> September	First day of Autumn Term
Friday 22 <sup>nd</sup> October	InSET (school closed for pupils)
Monday 25 <sup>th</sup> – Friday 29 <sup>th</sup> October	Half Term Break
Friday 17 <sup>th</sup> December	School ends at 1.30pm

